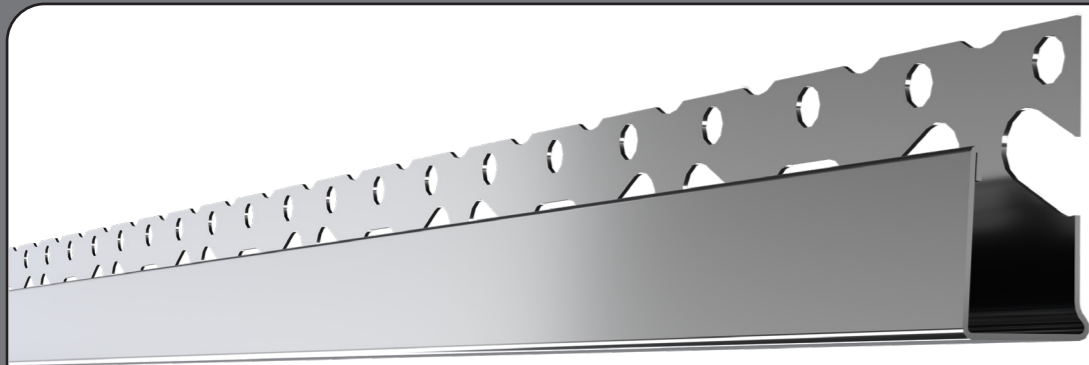


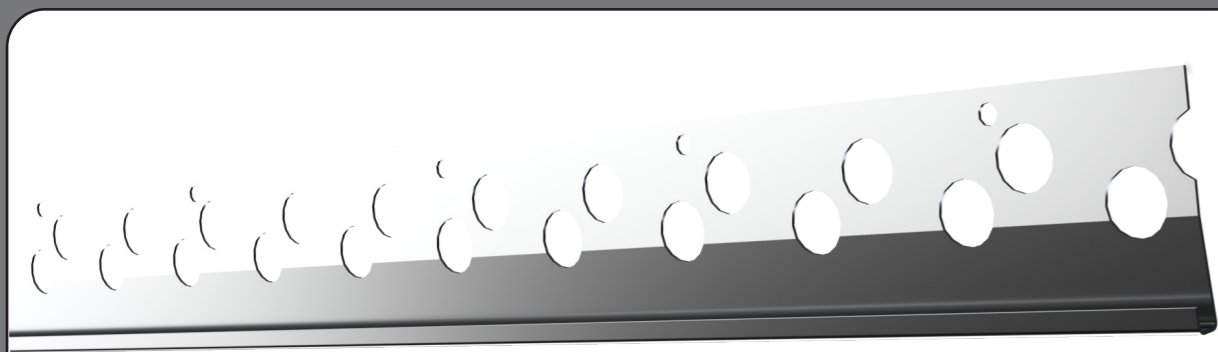
# Plaster Bead and Mesh

**SIMPSON**  
**Strong-Tie**

## INTERNAL USE ONLY Galvanised Steel



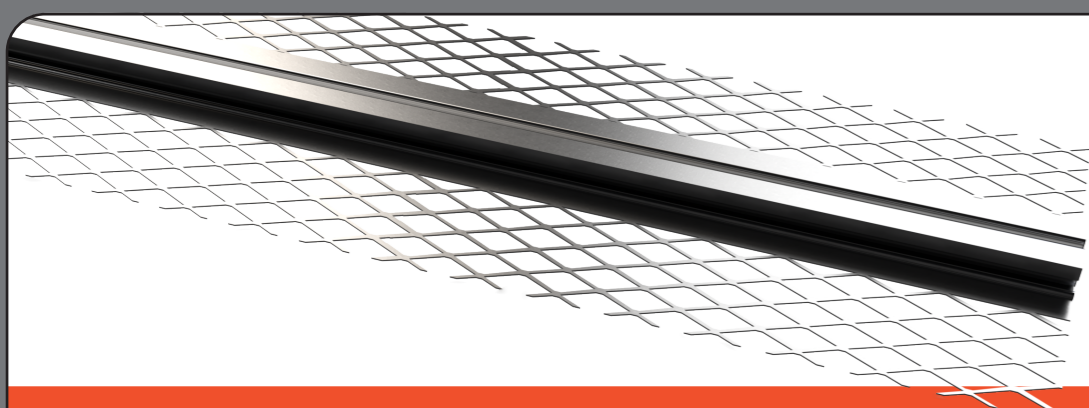
**1** Plasterboard Edge Bead



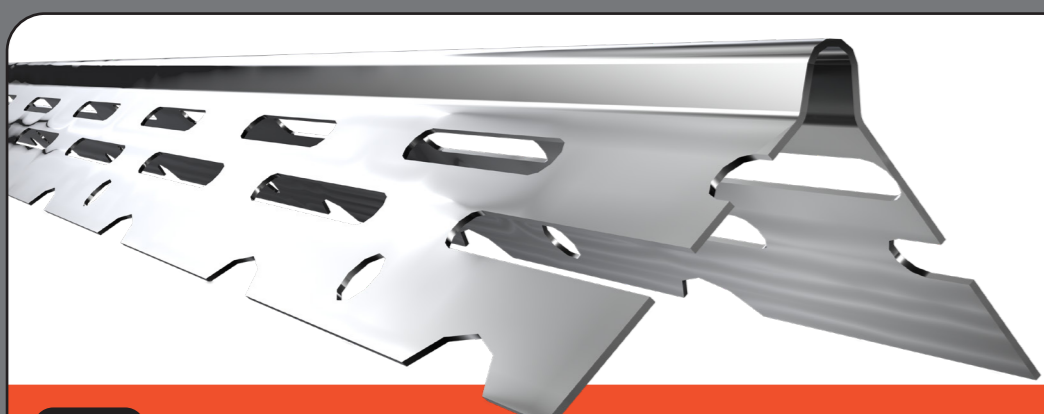
**2** Plaster Stop Bead



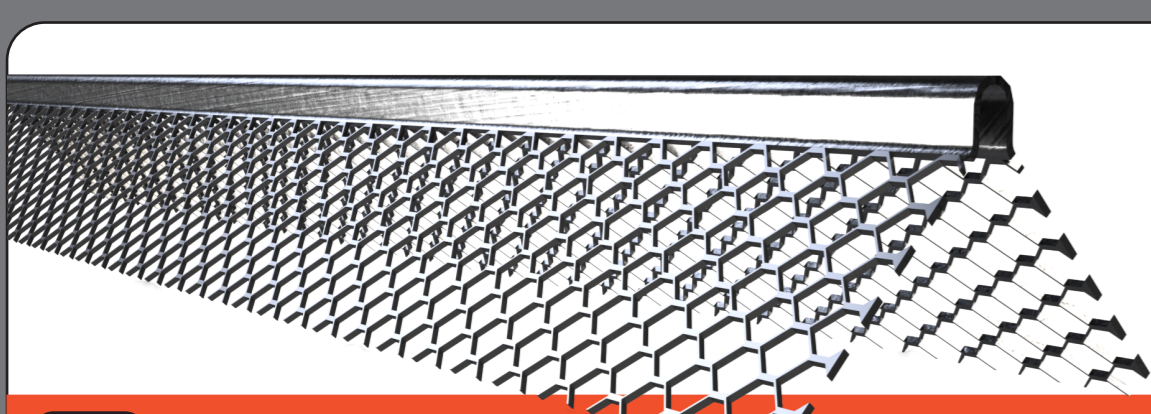
**3** Plaster Stop Bead



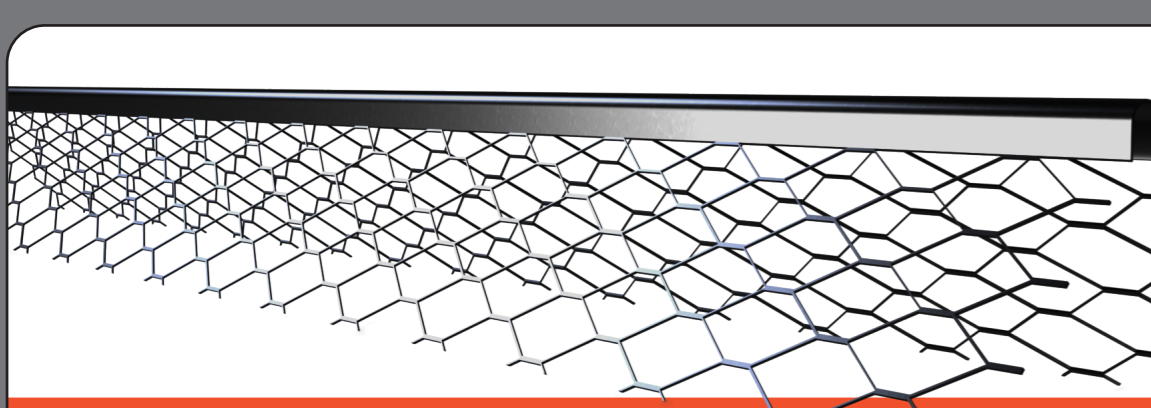
**4** Movement Bead



**5** Thin Coat Bead



**6** Mini Mesh Bead

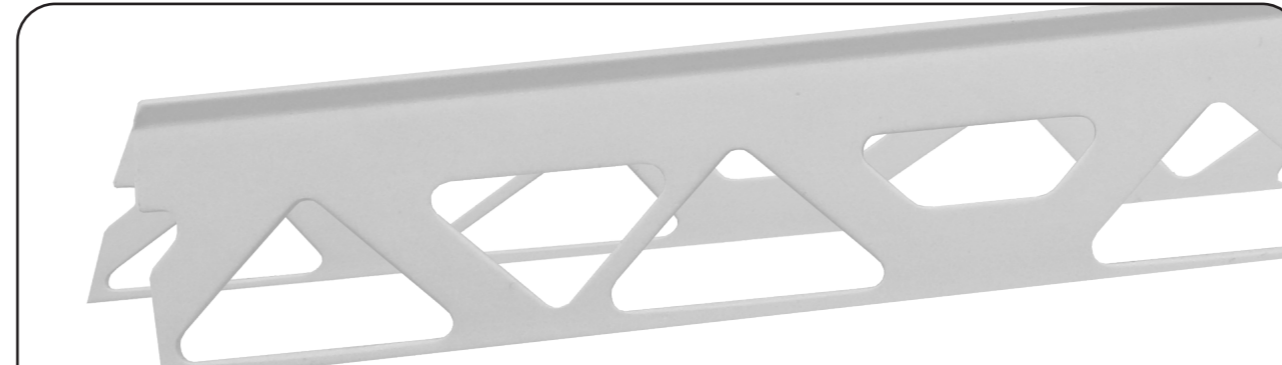


**7** Standard Angle Bead



**8** Diamond Metal Lath

## INTERNAL & EXTERNAL USE PVCu



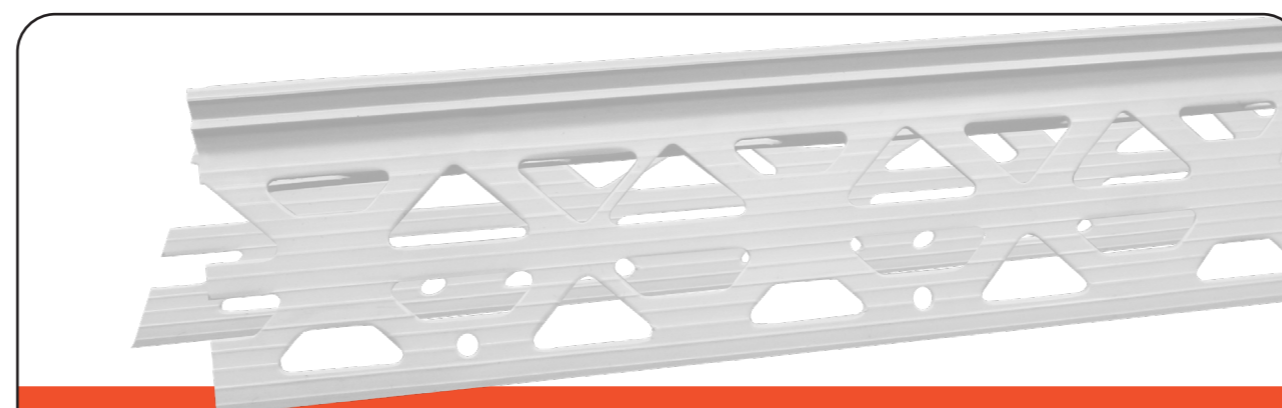
**9** PVCu Thin Coat Bead



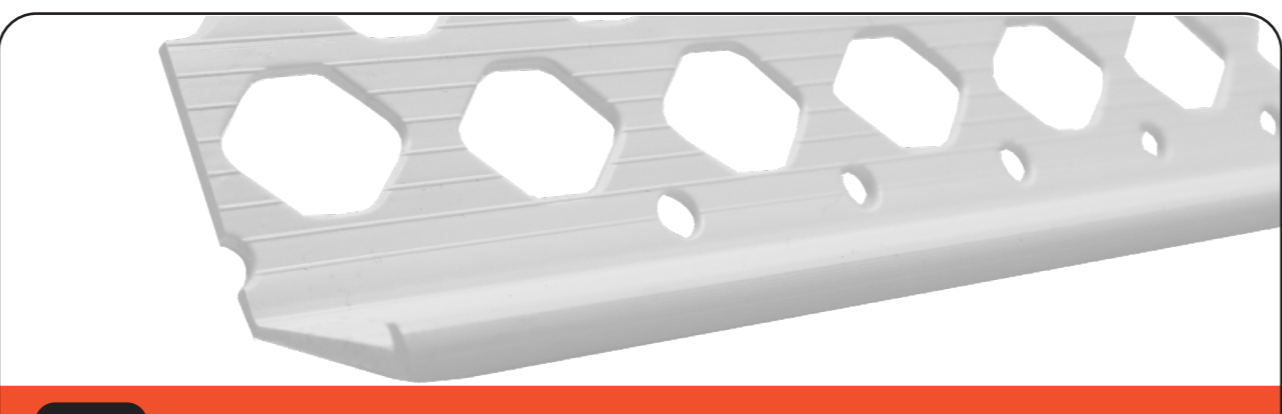
**10** PVCu Arch Angle Bead



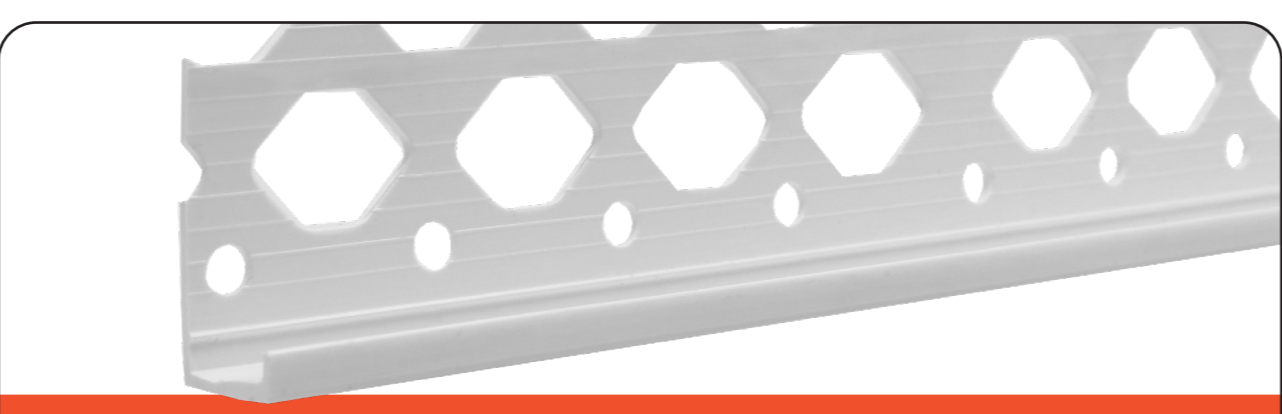
**11** PVCu Mini Mesh Bead



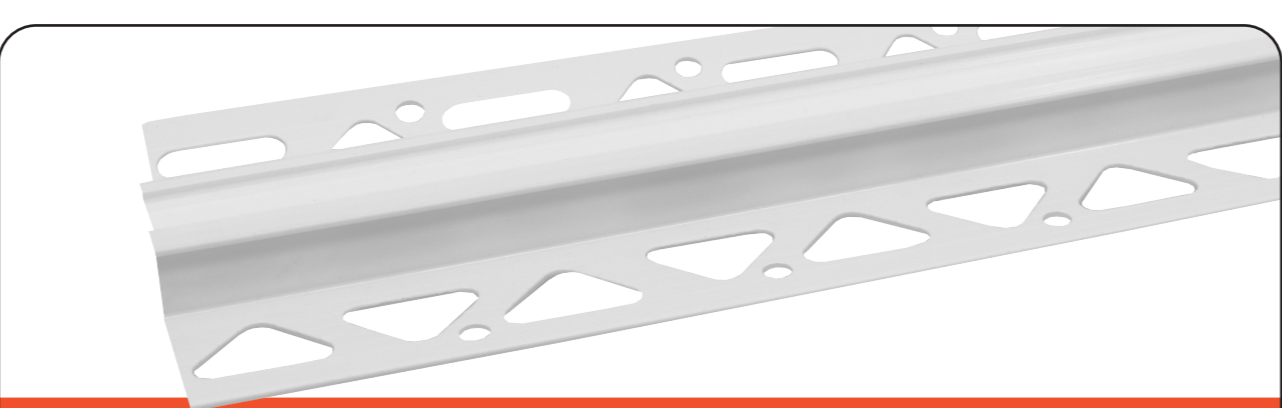
**12** PVCu Angle Bead



**13** PVCu Bell Cast Bead



**14** PVCu Stop Bead

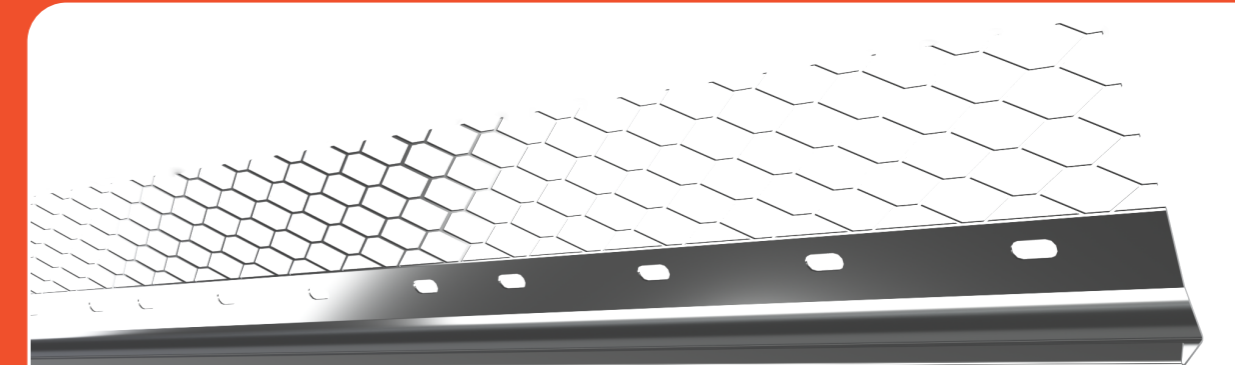


**15** PVCu Movement Bead

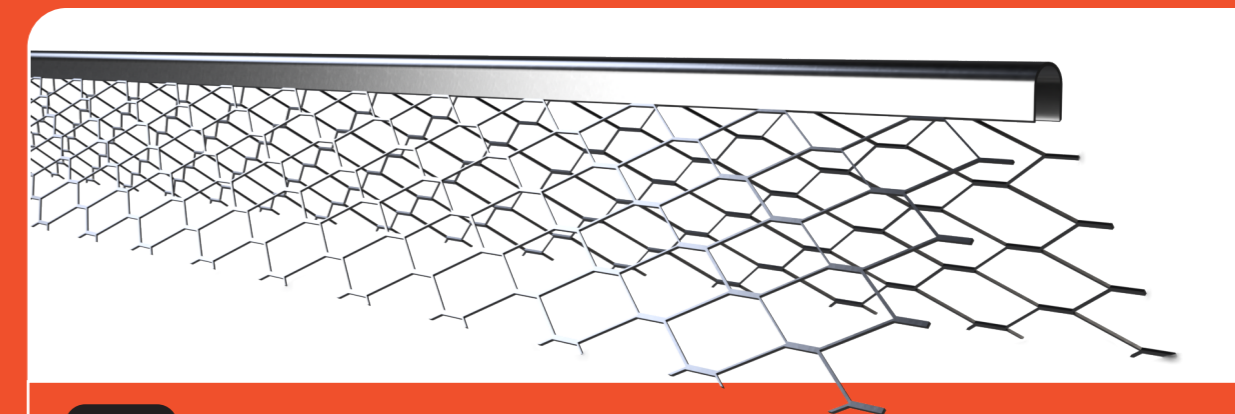
In accordance with NHBC and LABC regulations, ALL beads used externally should be made from austenitic stainless steel or PVCu plastic.

**Galvanised steel beads are no longer accepted for external use.**

## EXTERNAL USE Stainless Steel



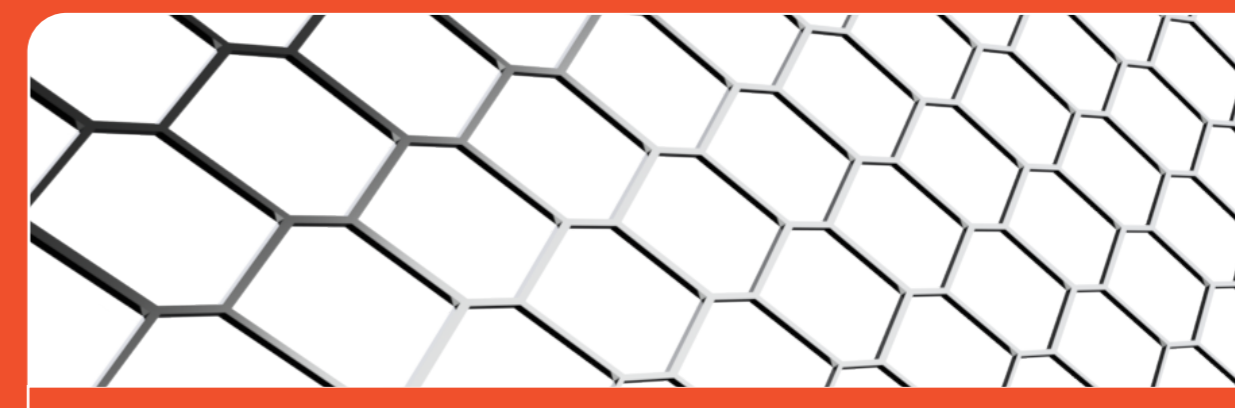
**16** Plaster Stop Bead



**17** Standard Angle Bead



**18** Render Stop Bead



**19** Diamond Metal Lath

|           |  |  |
|-----------|--|--|
| <b>1</b>  | <b>PEB</b><br>Plasterboard Edge Bead (25mm Wing)       | Reinforces plasterboard edges:<br>PEB1030 for 9.5mm plasterboard, PEB1330 for 12.5mm plasterboard, PEB1530 for 14.5mm plasterboard (3.0m)  |
| <b>2</b>  | <b>PSB</b><br>Plaster Stop Bead (30mm Perforated Wing) | Thin coat perforated stop bead provides a neat finish to plaster edges at openings, ceilings and abutment of walls:<br>PSB0324, PSB0330, PSB0624 and PSB0630 (2.4m and 3.0m)   |
| <b>3</b>  | <b>PSB</b><br>Plaster Stop Bead (65mm Mesh Wing)       | Stop bead with mesh wing provides a neat finish to plaster edges at openings, ceilings and abutment of walls:<br>PSB1024, PSB1030, PSB1324, PSB1624, PSB1330, PSB1630 and PSB1930 (2.4m/3.0m)  |
| <b>4</b>  | <b>MVB</b><br>Movement Bead (65mm Mesh Wing)           | 140mm wide movement bead helps to prevent cracking in plaster finishes.<br>MVB1030, MVB1330 AND MVB1630 (3.0m)   |
| <b>5</b>  | <b>TCB</b><br>Thin Coat Bead (25mm Wing)               | Thin coat bead with perforated wings that provide an excellent mortar key. Suitable for 3mm plaster finishes:<br>TCB2404 and TCB3004 (2.4m/3.0m)   |
| <b>6</b>  | <b>MMB</b><br>Mini Mesh Bead (Galvanised Steel)        | Thin coat bead with mesh wings that provide an excellent mortar key. Suitable for 3mm plaster finishes:<br>MMB24 and MMB30 (2.4m/3.0m)   |
| <b>7</b>  | <b>SAB</b><br>Standard Angle Bead (Galvanised Steel)   | Standard angle bead with 45mm or 53mm mesh wing. Helps to ensure a true, straight arris and prevent chipping and cracking to vulnerable corners:<br>SAB24 and SAB30 (45mm standard wing 2.4m/3.0m)<br>SAB24W and SAB30W (53mm wide wing 2.4m/3.0m)                           |
| <b>8</b>  | <b>DML</b><br>Expanded Metal Lath (Galvanised Steel)   | Diamond metal lath. Ideal for use as a general reinforcement mesh, supplied in a 2400 x 700mm sheet: <b>DML26/10</b>   |
| <b>9</b>  | <b>PAB</b><br>PVCu Thin Coat Angle Bead                | Corrosion resistant, convenient and easy to cut: <b>PAB0225W (white 2.5m)</b>  |
| <b>10</b> | <b>PAAB</b><br>PVCu Arch Angle Bead                    | Corrosion resistant, convenient and easy to cut: <b>PAAB0225W and PAAB0230W (white 2.5m/3.0m)</b>  |
| <b>11</b> | <b>PMM</b><br>PVCu Mini Mesh Bead                      | Corrosion resistant, convenient and easy to cut: <b>PMM0225W (white 2.5m)</b>  |
| <b>12</b> | <b>PSAB</b><br>PVCu Standard Angle Bead                | Corrosion resistant, convenient and easy to cut. PSAB helps to ensure a true, straight arris: <b>PSAB0430W, PSAB0630W, PSAB0825W, PSAB1025G, PSAB1025I, PSAB1025W, PSAB1030I, PSAB1030W, PSAB1525W, PSAB1530I, PSAB1530W, PSAB2030W</b> (G=grey, I=ivory, W=white 2.5m/3.0m) |
| <b>13</b> | <b>PBC</b><br>PVCu Bell Cast Bead                      | Corrosion resistant, convenient and easy to cut. PBC provides an enhanced weathering detail: <b>PBC1030W, PBC1530I, PBC1530W, PBC2030W</b> (I=ivory, W=white 3.0m)   |
| <b>14</b> | <b>PPSB</b><br>PVCu Plaster Stop Bead                  | Corrosion resistant, convenient and easy to cut. PPSB provides a neat finish to plaster edges at openings, ceilings and abutment of walls: <b>PPSB0430W, PPSB1025W, PPSB1030I, PPSB1030W, PPSB1530I, PPSB1525W, PPSB1530W, PPSB2030W</b> (I=ivory, W=white 2.5m/3.0m)        |
| <b>15</b> | <b>PMB</b><br>PVCu Movement Bead                       | Corrosion resistant, convenient and easy to cut. PMB movement bead with 10mm and 15mm expansion joint options: <b>PMB1025W, PMB1525I and PMB1525W</b> (I=ivory, W=white 10mm 2.5m/15mm 2.5m)   |
| <b>16</b> | <b>PSB-S</b><br>Plaster Stop Bead (Stainless Steel)    | Stainless steel plaster stop bead provides a neat finish to plaster edges at openings, ceilings and abutment of walls: <b>PSB1030S, PSB1330S, PSB1630S, PSB1930S</b> (3.0m)  |
| <b>17</b> | <b>SAB-S</b><br>Standard Angle Bead (Stainless Steel)  | Stainless steel angle bead with 45mm mesh wing. Helps to ensure a true, straight arris and prevent chipping and cracking to vulnerable corners: <b>SAB245W, SAB305W SAB30S</b> (2.4m/3.0m)   |
| <b>18</b> | <b>ERS-S</b><br>Render Stop (Stainless Steel)          | Stainless steel render stop bead with a 45mm mesh wing. Suitable for 18mm - 19mm render depths. ERS provides an enhanced weathering detail: <b>ERS30S</b> (3.0m)   |
| <b>19</b> | <b>DML-S</b><br>Expanded Metal Lath (Stainless Steel)  | Stainless steel diamond pattern metal lath. Ideal for use as a general reinforcement mesh, supplied in a 2400 x 700mm sheet: <b>DML26S/5</b>   |